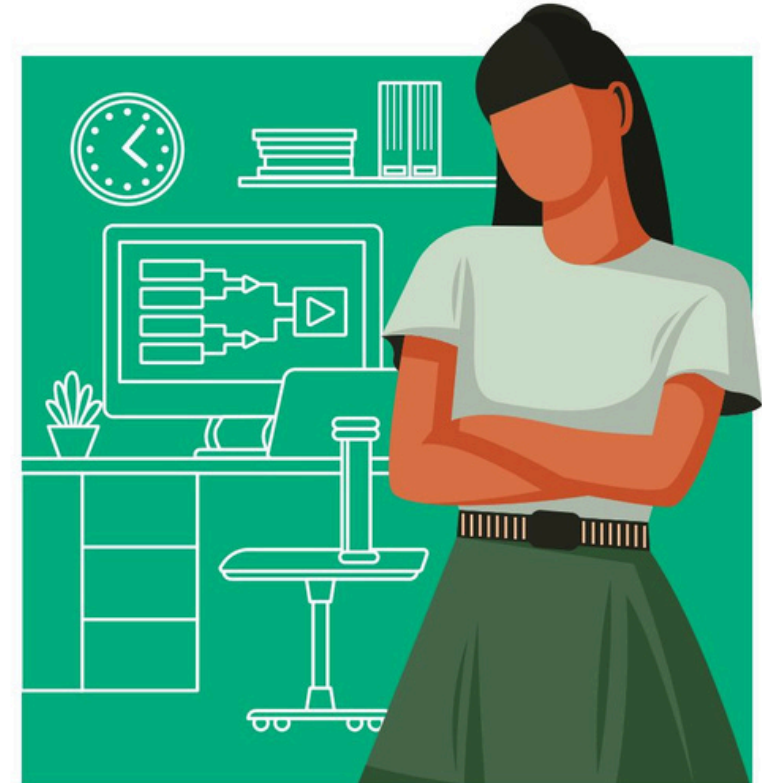


Training & Certification Learning Paths

2025 Edition

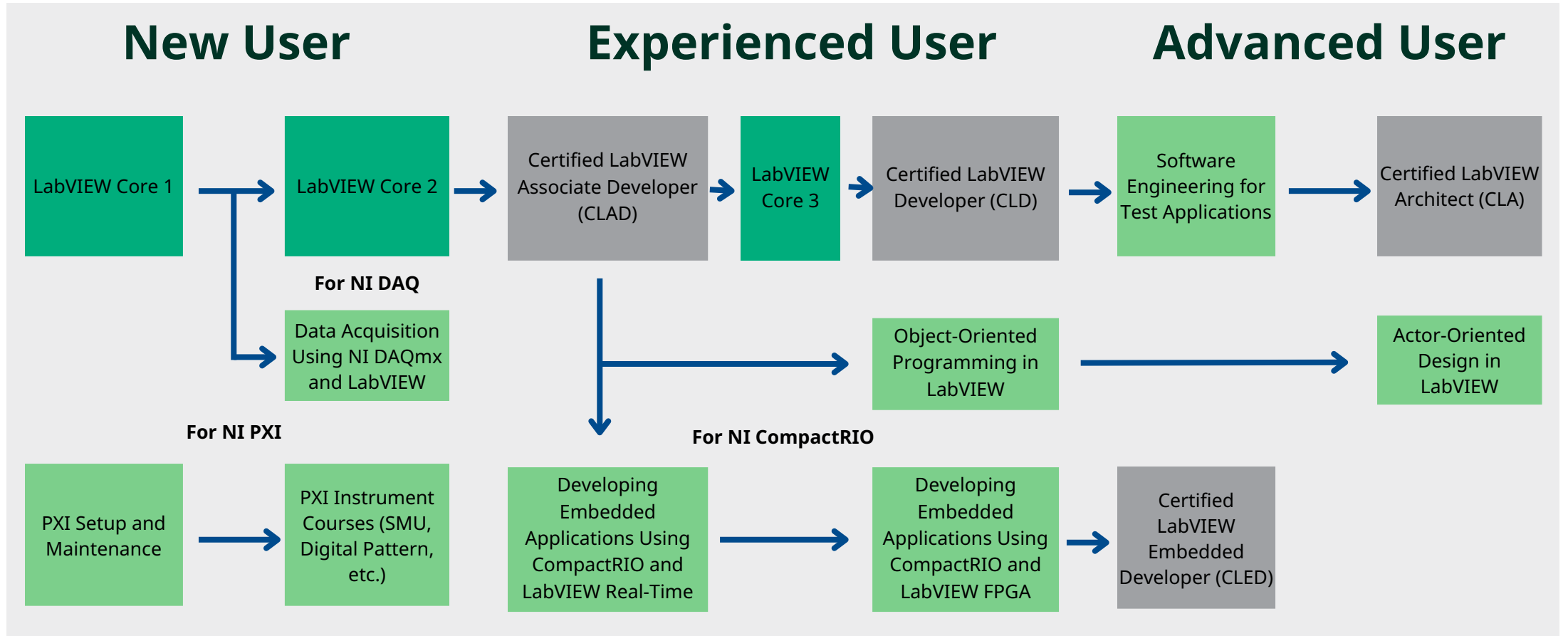


**Increase Product Usage.
Reduce Time to Value.
Achieve Excellence.**

1. NI LabVIEW
2. NI TestStand
3. NI DIAdem
4. Hardware-in-the-Loop Test Systems
5. Semiconductor Test System
6. NI SystemLink™ Software



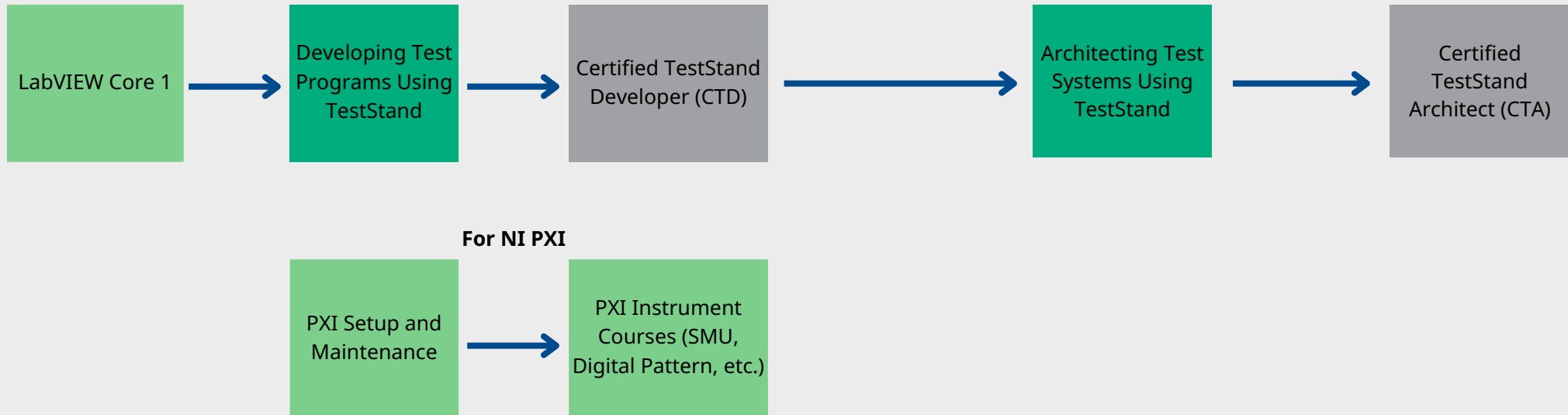
NI LabVIEW



NI TestStand

New to Intermediate User

Experienced to Advanced User



RECOMMENDED COURSE



OPTIONAL COURSE



OPTIONAL CERTIFICATION

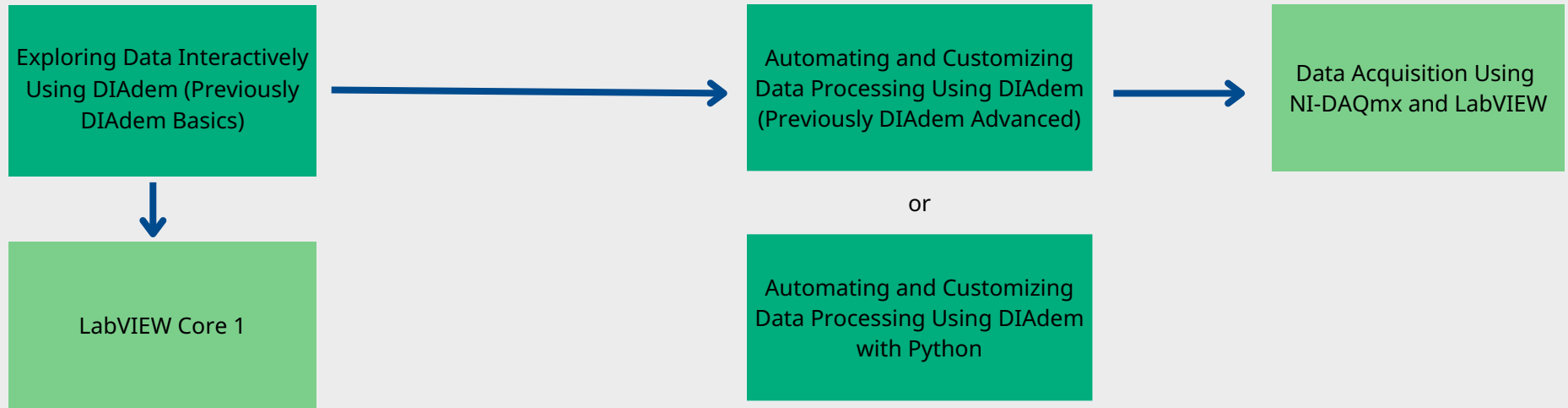


For any questions related to this learning path, fill out this [form](#) or email us at services@ni.com.

NI DIAdem

New to Intermediate User

Experienced to Advanced User



RECOMMENDED COURSE



OPTIONAL COURSE



OPTIONAL CERTIFICATION



Hardware-in-the-Loop Test Systems

New to Intermediate User

Experienced to Advanced User



RECOMMENDED COURSE



OPTIONAL COURSE



OPTIONAL CERTIFICATION



For any questions related to this learning path, fill out this [form](#) or email us at services@ni.com.

Semiconductor Test System

Test Engineer

Test Program
Development with STS

Test Developer

Test Code Module
Development with STS
and LabVIEW

or

Test Code
Module Development
with STS and .NET/C#

Testing RF Parts

RFIC Test with STS and
.NET/C# (Previously RFIC
Test with STS)
On-Demand only



RECOMMENDED COURSE



OPTIONAL COURSE

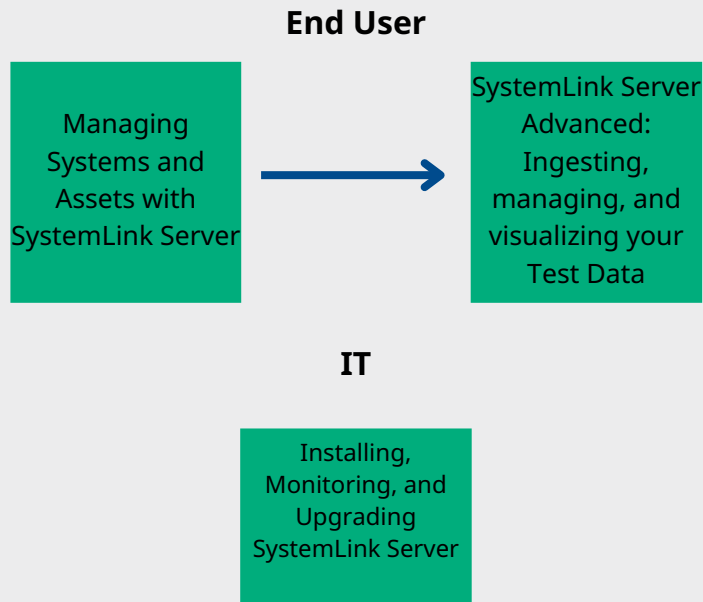


OPTIONAL CERTIFICATION

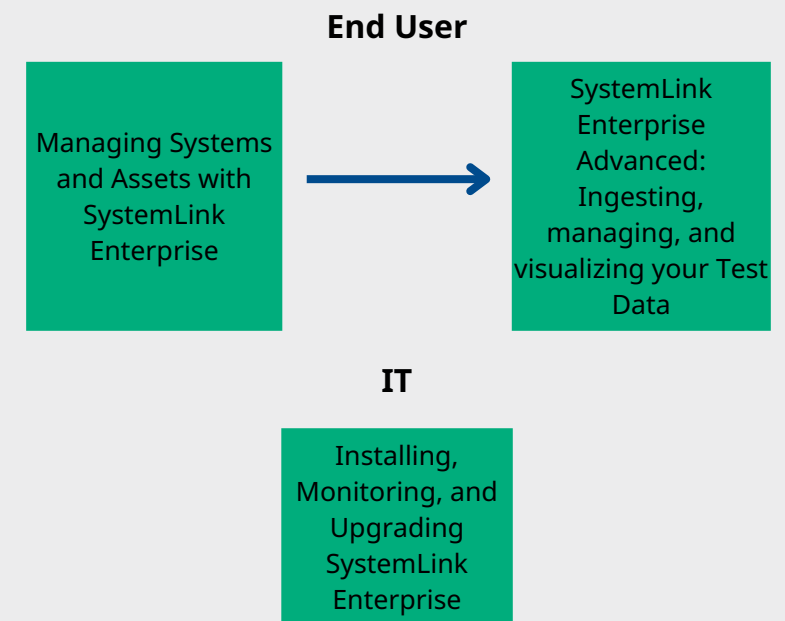


NI SystemLink™ Software

SystemLink Server



SystemLink Enterprise



RECOMMENDED COURSE



OPTIONAL COURSE



OPTIONAL CERTIFICATION

For any questions related to this learning path, fill out this [form](#) or email us at services@ni.com.



Neither Emerson, Emerson Automation Solutions, nor any of their affiliated entities assumes responsibility for the selection, use, or maintenance of any product. Responsibility for proper selection, use, and maintenance of any product remains solely with the purchaser and end user.

NI, National Instruments, the National Instruments corporate logo, ni.com, LabVIEW, TestStand, VeriStand, SystemLink, CompactRIO, and NI-DAQmx are marks owned by one of the companies in the Test & Measurement business unit of Emerson Electric Co. Emerson and the Emerson logo are trademarks and service marks of Emerson Electric Co. The mark LabWindows is used under a license from Microsoft Corporation. Windows is a registered trademark of Microsoft Corporation in the United States and other countries. All other marks are the property of their respective owners. An NI Partner is a business entity independent from NI and has no agency or joint-venture relationship and does not form part of any business associations with NI.

The contents of this publication are presented for informational purposes only, and while every effort has been made to ensure their accuracy, they are not to be construed as warranties or guarantees, express or implied, regarding the products or services described herein or their use or applicability. All sales are governed by our terms and conditions, which are available upon request. We reserve the right to modify or improve the designs or specifications of such products at any time without notice.

NI 11500 N Mopac Expwy
Austin, TX 78759-3504

© 2025 National Instruments. All rights reserved.

ni.com